



# WBV-14e.2 LEVEE LIFT PRIOR TO ARMORING

## SOUTHEAST LOUISIANA FLOOD PROTECTION AUTHORITY - WEST

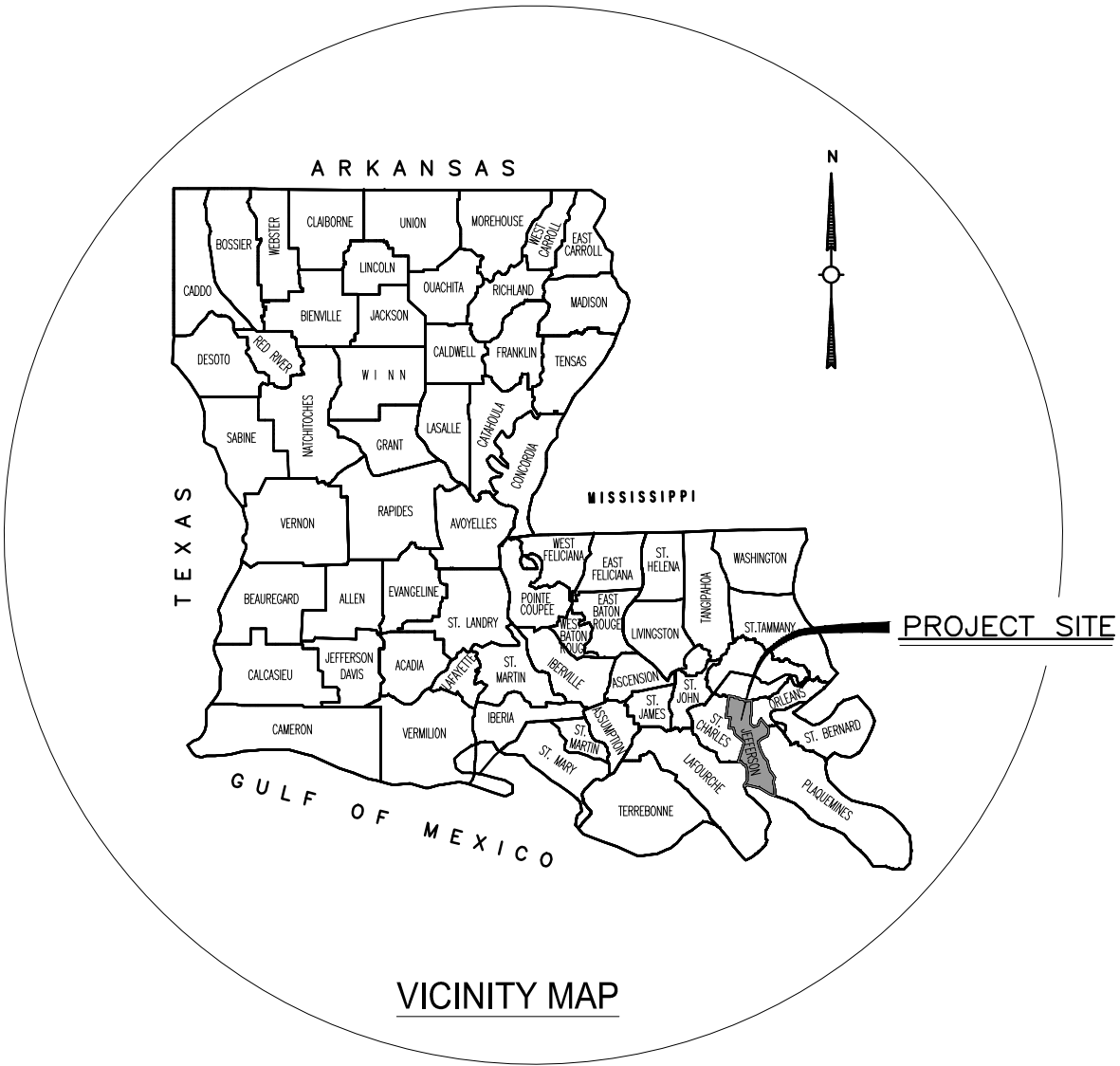
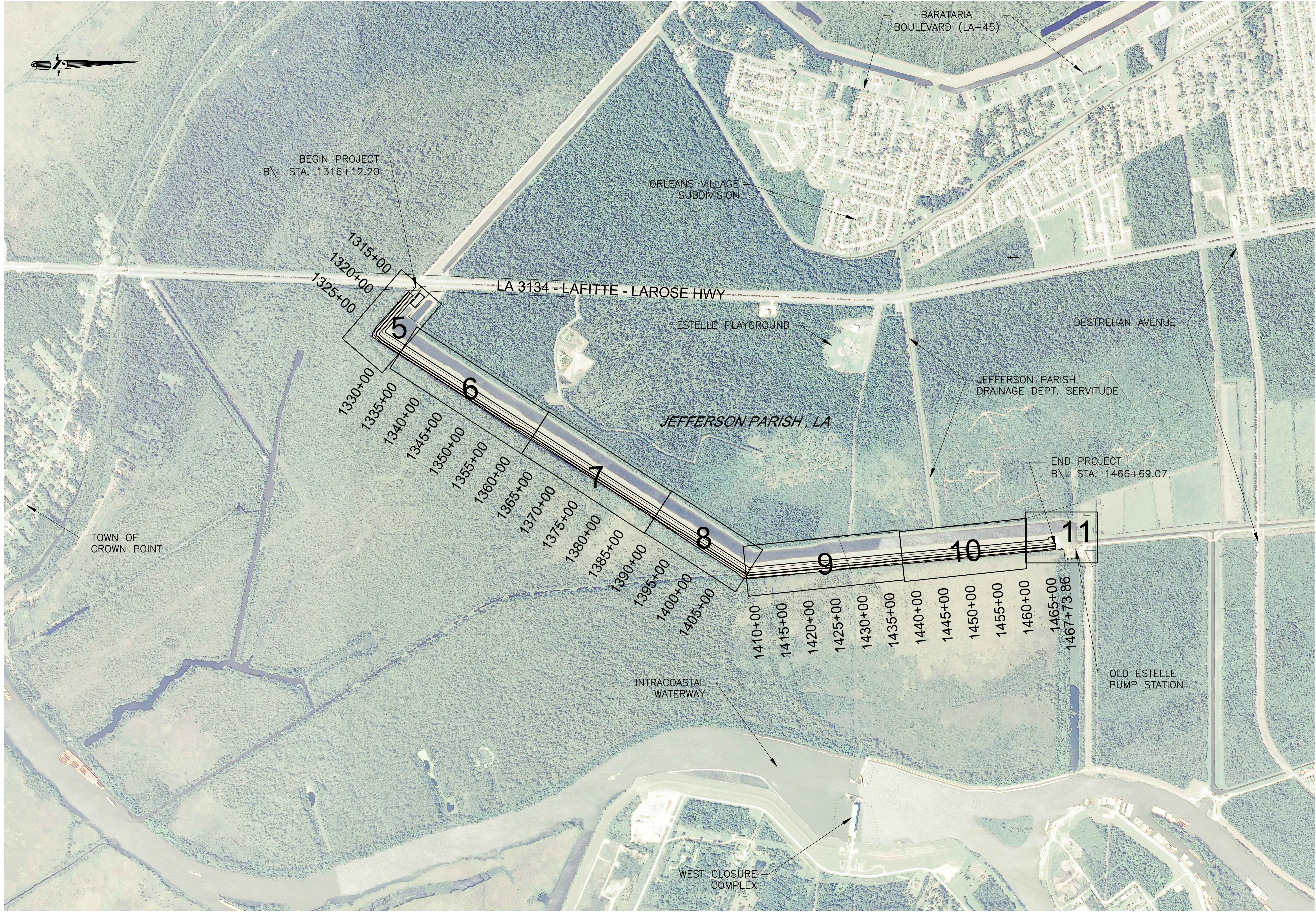
### JEFFERSON PARISH, LOUISIANA

NO.	INDEX OF DRAWINGS
00	COVER SHEET
01	LOCATION AND VICINITY MAP
02	GENERAL NOTES AND LEGEND
03	BASELINE & EXISTING FACILITIES TABULATIONS
04	CONSTRUCTION ACCESS AND LAYOUT
05	PLAN AND PROFILE, C/L STA 100+00 TO C/L STA 116+00
06	PLAN AND PROFILE, C/L STA 116+00 TO C/L STA 144+00
07	PLAN AND PROFILE, C/L STA 144+00 TO C/L STA 173+00
08	PLAN AND PROFILE, C/L STA 173+00 TO C/L STA 191+00
09	PLAN AND PROFILE, C/L STA 191+00 TO C/L STA 219+00
10	PLAN AND PROFILE, C/L STA 219+00 TO C/L STA 243+00
11	PLAN AND PROFILE, C/L STA 243+00 TO C/L STA 248+82.74
12	TYPICAL LEVEE DESIGN SECTION (REACH 1 AND REACH 2)
13	TYPICAL LEVEE DESIGN SECTION (REACH 3A AND REACH 3B)
14	TYPICAL LEVEE DESIGN SECTION (REACH 3C)
15	DESIGN CROSS SECTIONS, C/L STA 100+00 TO C/L STA 110+00
16	DESIGN CROSS SECTIONS, C/L STA 110+01.36 TO C/L STA 115+00
17	DESIGN CROSS SECTIONS, C/L STA 120+00 TO C/L STA 130+00
18	DESIGN CROSS SECTIONS, C/L STA 135+00 TO C/L STA 140+29.12
19	DESIGN CROSS SECTIONS, C/L STA 142+21.38 TO C/L STA 155+00
20	DESIGN CROSS SECTIONS, C/L STA 159+37.84 TO C/L STA 170+00
21	DESIGN CROSS SECTIONS, C/L STA 175+00 TO C/L STA 180+00
22	DESIGN CROSS SECTIONS, C/L STA 184+48.57 TO C/L STA 191+42.29
23	DESIGN CROSS SECTIONS, C/L STA 191+79.92 TO C/L STA 205+00
24	DESIGN CROSS SECTIONS, C/L STA 207+71.02 TO C/L STA 215+00
25	DESIGN CROSS SECTIONS, C/L STA 216+71.69 TO C/L STA 225+00
26	DESIGN CROSS SECTIONS, C/L STA 230+00 TO C/L STA 245+00
27	DESIGN CROSS SECTIONS, C/L STA 247+05.81 TO C/L STA 248+82.74
28	MISCELLANEOUS DETAILS
29	MISCELLANEOUS DETAILS
30	SLOPE PAVING TIE-IN DETAILS



DESIGNED		AMH/HJD	NO.	DATE
DETAILED		AMH		
CHECKED		LJP		
AIMS GROUP, INC 4421 ZENITH ST METAIRIE, LA 70001				
WBV 14e.2 LEVEE LIFT PRIOR TO ARMORING SLFPA - WEST JEFFERSON PARISH, LOUISIANA				
COVER SHEET				
PROJECT NO. 2017-277				
DATE FEB 2017				
SHEET NO. 00				





- NOTES:
- COORDINATES REFER TO THE LOUISIANA STATE PLANE COORDINATE SYSTEM OF 1983, SOUTH ZONE.
  - STATIONING REFERS TO WEST BANK AND VICINITY (WBV) SYSTEM BASELINE.

WBV 146.2 LEVEE LIFT PRIOR TO ARMORING SLFPA - WEST JEFFERSON PARISH, LOUISIANA		LOCATION AND VICINITY MAP	
PROJECT NO. 2017-277		DATE FEB 2017	
SHEET NO. 01		REVISION DESCRIPTION	
DESIGNED		NO.	
DETAILED		NO.	
CHECKED		NO.	
AMH/HJD		DATE	
AMH		BY	
LUP			
AIMS GROUP, INC			
4421 ZENITH ST			
METAIRIE, LA			
70001			
SOUTHEAST LOUISIANA FLOOD PROTECTION AUTHORITY - WEST			
WEST JEFFERSON LEVEE DISTRICT / ALGIERES LEVEE DISTRICT			





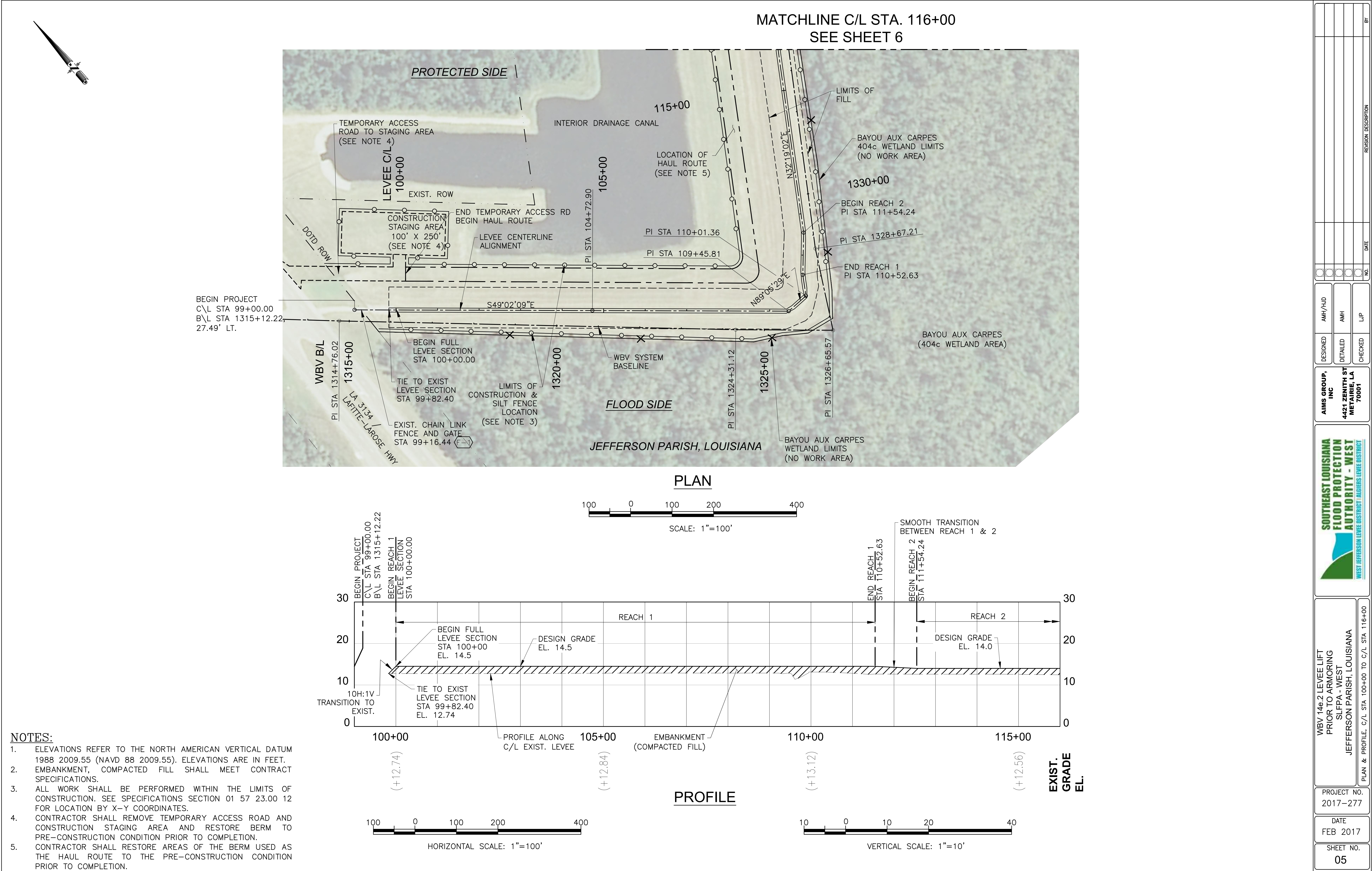


BAYOU AUX CARPES WETLAND LIMITS (FLOOD SIDE)			
SYSTEM BASLINE STATION	BASLINE OFFSET	LAMBERT X	LAMBERT Y
1315+71.62	23.84' RT.	3,672,441.60	472,428.09
1324+74.16	29.06' RT.	3,673,109.04	471,819.85
1325+44.17	13.65' RT.	3,673,171.90	471,785.40
1326+05.34	7.31' RT.	3,673,222.14	471,749.93
1326+93.67	4.96' RT.	3,673,290.11	471,738.11
1327+59.59	17.82' RT.	3,673,332.97	471,789.83
1330+70.75	32.40' RT.	3,673,507.34	472,045.47
1337+66.40	18.92' RT.	3,673,876.76	472,635.08
1355+79.94	25.28' RT.	3,674,874.22	474,149.73
1368+67.19	2.51' LT.	3,675,553.96	475,243.24
1380+17.46	3.59' LT.	3,676,173.12	476,212.61
1400+25.12	23.41' RT.	3,677,281.40	477,886.86
1407+04.34	21.95' RT.	3,677,647.88	478,458.73
1408+41.79	38.89' RT.	3,677,736.54	478,565.13
1409+09.53	32.19' RT.	3,677,767.57	478,625.71
1410+58.04	28.18' RT.	3,677,764.62	478,791.22
1427+81.56	13.49' RT.	3,677,589.88	480,505.91
1436+62.62	18.86' RT.	3,677,513.41	481,383.67
1454+63.82	16.49' RT.	3,677,343.84	483,176.87
1463+05.27	17.02' RT.	3,677,266.26	484,014.73
1468+05.55	28.11' LT.	3,677,218.60	484,520.11
1469+07.88	14.38' RT.	3,677,328.23	484,536.15
1469+32.44	59.77' RT.	3,677,402.53	484,539.63
1472+28.05	55.44' RT.	3,677,392.12	484,806.73
1472+43.28	59.38' RT.	3,677,404.88	484,815.93
1473+23.22	106.78' RT.	3,677,467.51	484,808.04
1473+32.23	111.29' RT.	3,677,477.58	484,808.07
1473+44.99	112.94' RT.	3,677,489.72	484,812.35
1473+86.53	112.93' RT.	3,677,526.80	484,831.07
1474+03.37	123.45' RT.	3,677,546.57	484,829.27









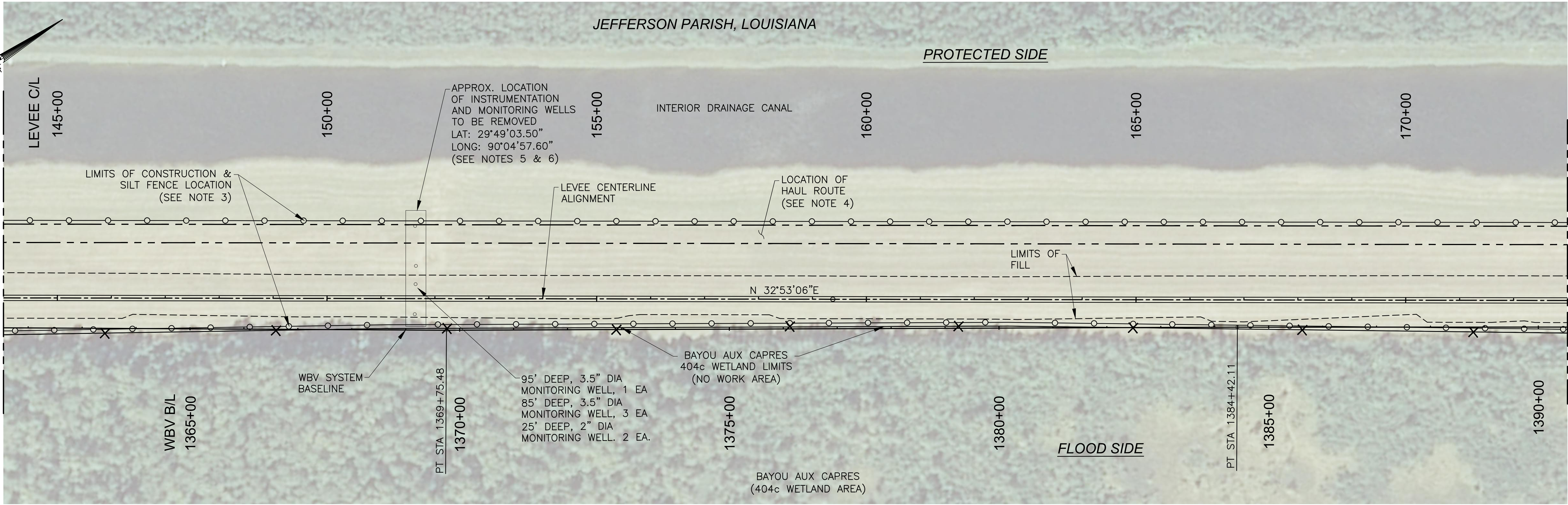






MATCHLINE C/L STA. 144+00.00

SEE SHEET 6



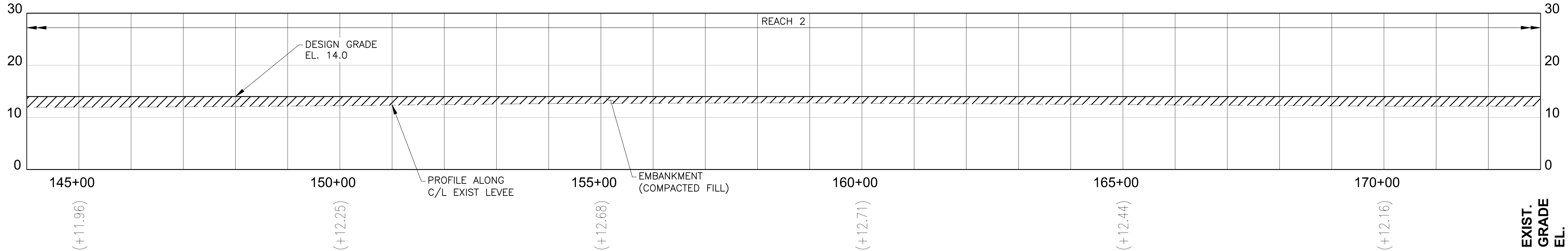
MATCHLINE C/L STA. 173+00.00

SEE SHEET 8

PLAN



SCALE: 1"=100'



EXIST.  
GRADE  
EL.

NOTES:

- ELEVATIONS REFER TO THE NORTH AMERICAN VERTICAL DATUM 1988 2009.55 (NAVD 88 2009.55). ELEVATIONS ARE IN FEET.
- EMBANKMENT, COMPACTED FILL SHALL MEET CONTRACT SPECIFICATIONS.
- ALL WORK SHALL BE PERFORMED WITHIN THE LIMITS OF CONSTRUCTION. SEE SPECIFICATIONS SECTION 01 57 23.00 12 FOR LOCATION BY X-Y COORDINATES.
- CONTRACTOR SHALL RESTORE AREAS OF THE BERM USED AS THE HAUL ROUTE TO THE PRE-CONSTRUCTION CONDITION PRIOR TO COMPLETION.
- CONTRACTOR TO FIELD VERIFY LOCATION OF ALL EQUIPMENT, INCLINOMETERS, MONITORING WELLS AND PIEZOMETERS TO BE REMOVED AND ABANDONED. ANY INSTRUMENTATION LOCATED BEYOND THE LIMITS OF CONSTRUCTION IS NOT TO BE DISTURBED. ALL FACILITIES TO BE REMOVED OR ABANDONED SHALL BE COMPLETELY REMOVED TO AN ELEVATION NO LESS THAN THREE FEET BELOW GRADE.
- ALL BELOW GROUND INSTRUMENTATION AND MONITORING WELLS SHALL BE PROPERLY PLUGGED AND ABANDONED IN ACCORDANCE WITH STATE REGULATORY GUIDELINES. SEE SPECIAL PROVISION SP-13 IN THE CONTRACT SPECIFICATIONS FOR DETAILS ON ABANDONMENT AND REMOVAL OF EXISTING FACILITIES. ALL ABOVE GROUND INSTRUMENTATION IS TO BE REMOVED BY OTHERS.

PROFILE



VERTICAL SCALE: 1"=10'



HORIZONTAL SCALE: 1"=100'



WBV 146.2 LEVEE LIFT  
PRIOR TO ARMORING  
SLFPA - WEST  
JEFFERSON PARISH, LOUISIANA

PLAN & PROFILE, C/L STA 144+00 TO C/L STA 173+00

PROJECT NO.  
2017-277

DATE  
FEB 2017

SHEET NO.  
07

AIMS GROUP,  
INC  
4421 ZENITH ST  
METAIRIE, LA  
70001

DESIGNED  
AMH/HJD  
DETAILED  
AMH  
CHECKED  
LJP

NO  
DATE  
REVISION DESCRIPTION

BY







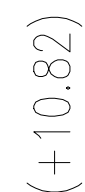






SEE SHEET 11

SCALE: 1"=100'

 $(+11.07)$  $(+11.36)$  $(+12.80)$  $(+10.65)$ 

**EXIST.  
GRADE  
EL.**

VERTICAL SCALE: 1"=10'



HORIZONTAL SCALE: 1"=100'

1. ELEVATIONS REFER TO THE NORTH AMERICAN VERTICAL DATUM 1988 2009.55 (NAVD 88 2009.55). ELEVATIONS ARE IN FEET.
2. EMBANKMENT, COMPACTED FILL SHALL MEET CONTRACT SPECIFICATIONS.
3. ALL WORK SHALL BE PERFORMED WITHIN THE LIMITS OF CONSTRUCTION. SEE SPECIFICATIONS SECTION 01 57 23.00 12 FOR LOCATION BY X-Y COORDINATES.
4. CONTRACTOR SHALL RESTORE AREAS OF THE BERM USED AS THE HAUL ROUTE TO THE PRE-CONSTRUCTION CONDITION PRIOR TO COMPLETION.
5. CONTRACTOR TO FIELD VERIFY LOCATION OF ALL EQUIPMENT, INCLINOMETERS, MONITORING WELLS AND PIEZOMETERS TO BE REMOVED AND ABANDONED. ANY INSTRUMENTATION LOCATED BEYOND THE LIMITS OF CONSTRUCTION IS NOT TO BE DISTURBED. ALL FACILITIES TO BE REMOVED OR ABANDONED SHALL BE COMPLETELY REMOVED TO AN ELEVATION NO LESS THAN THREE FEET BELOW GRADE.
6. ALL BELOW GROUND INSTRUMENTATION AND MONITORING WELLS SHALL BE PROPERLY PLUGGED AND ABANDONED IN ACCORDANCE WITH STATE REGULATORY GUIDELINES. SEE SPECIAL PROVISION SP-13 IN THE CONTRACT SPECIFICATIONS FOR DETAILS ON ABANDONMENT AND REMOVAL OF EXISTING FACILITIES. ALL ABOVE GROUND INSTRUMENTATION IS TO BE REMOVED BY OTHERS.



**SOUTHEAST LOUISIANA  
FLOOD PROTECTION  
AUTHORITY - WEST**  
WEST JEFFERSON LEVEE DISTRICT | ALGERS LEVEE DISTRICT

WBV 14e.2 LEVEE LIFT  
PRIOR TO ARMORING  
SLFPA - WEST  
JEFFERSON PARISH, LOUISIANA

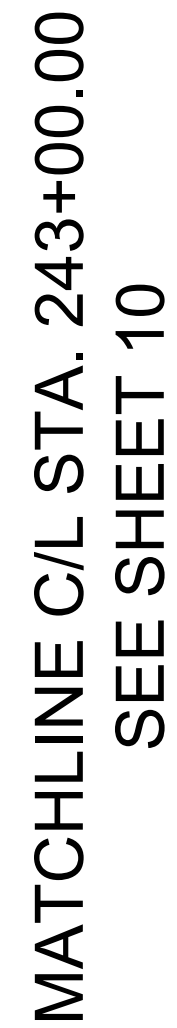
PLAN &amp; PROFILE, C/L STA 219+00 TO C/L STA 243+00

PROJECT NO.  
2017-277

DATE  
FEB 2017

SHEET NO.  
10





JEFFERSON PARISH, LOUISIANA

**PROTECTED SIDE**

LIMITS OF CONST. & SILT FENCE LOCATION (SEE NOTE 3)

LEVEE C/L 245+00

LOCATION OF HAUL ROUTE (SEE NOTE 4)

INTERIOR DRAINAGE CANAL

PI STA 247+05.81

PI STA 247+55.89

250+00

EXIST. SLOPE PAVING TO REMAIN

END OF PROJECT STA 248+82.74

TIE-IN LEVEE TO EXIST. SLOPE PAVING STA 248+82.74 (SEE SHEET 30)

N08°44'07"W

N05°18'05"W

N05°18'05"W

WBV B/L 1465+00

WBV SYSTEM BASELINE

BAYOU AUX CAPRES 404c WETLAND LIMITS (NO WORK AREA)

SILT FENCE

OLD ESTELLE PUMP STATION

1470+00

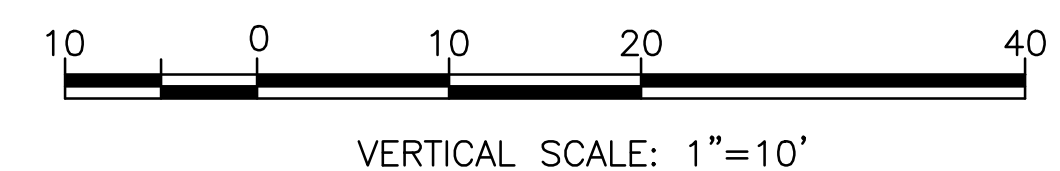
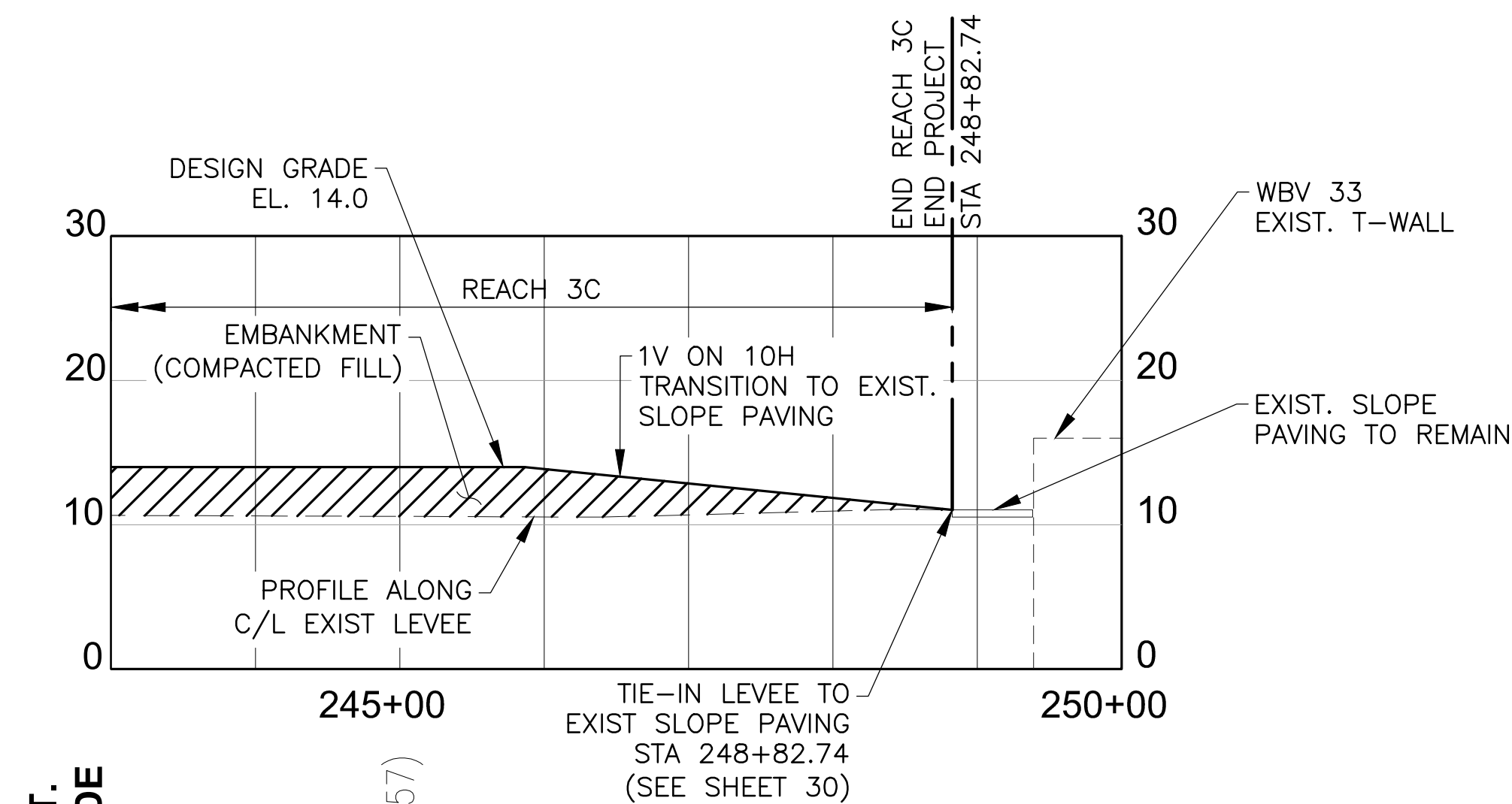
1471+00

PI STA 1467+73.86

**FLOOD SIDE**

BAYOU AUX CAPRES (404c WETLAND AREA)

EXIST. ROW



 <p> <b>SOUTHEAST LOUISIANA FLOOD PROTECTION AUTHORITY - WEST</b>  <small>WEST JEFFERSON LEVEE DISTRICT   AIGERS LEVEE DISTRICT</small> </p>	PLAN & PROFILE, C/L STA 243+00 TO C/L STA 248+82.74		
	PROJECT NO. 2017-277		
	DATE FEB 2017		
	SHEET NO. 11		
	JEFFERSON PARISH, LOUISIANA SLFA - WEST PRIOR TO ARMORING WBV 148.2 LEVEE LIFT AIMS GROUP, INC		
DESIGNED	AMH/HJD		
DETAILED	AMH		
CHECKED	LJP		
NO.	DATE		BY
REVISION		DESCRIPTION	













1. UPON LEAVING THE JOB SITE AND AFTER THE HAUL ROUTE IS NO LONGER IN USE, THE PROTECTED SIDE BERM FOR EACH DESIGN SECTION SHALL BE GRADED/DRESSED TO SLOPE TO DRAIN TOWARDS TO THE INTERIOR DRAINAGE CANAL PRIOR TO FERTILIZING, SEEDING AND MULCHING.
2. EMBANKMENT, COMPACTED FILL SHALL MEET CONTRACT SPECIFICATIONS.
3. ALL WORK SHALL BE PERFORMED WITHIN THE LIMITS OF CONSTRUCTION. SEE SPECIFICATION SECTION 01 57 23.00 12 FOR LOCATION BY X-Y COORDINATES.
4. REFER TO SHEET 3 FOR X-Y COORDINATES OF THE BAYOU AUX CARPES WETLAND LIMITS AND RIGHT OF WAY LIMITS.
5. LIMITS OF CLEARING, SEEDING, AND FERTILIZING AND LIMITS OF CONSTRUCTION SHALL BE WITHIN THE EXISTING MAINTAINED (CLEARED) RIGHT OF WAY. NO WOODY VEGETATION SHOULD BE CLEARED & GRUBBED.

	<p>WBV 14e.2 LEVEE LIFT PRIOR TO ARMORING SLFPA - WEST JEFFERSON PARISH, LOUISIANA</p>	<p>PROJECT NO. 2017-277</p>		<p>DATE FEB 2017</p>		<p>SHEET NO. 14</p>	
		<p>TYPICAL CROSS SECTIONS</p>					
		<p>AIMS GROUP, INC</p>		<p>DESIGNED</p>		<p>AMH/HJD</p>	
		<p>4421 ZENITH ST METAIRIE, LA 70001</p>		<p>DETAILED</p>		<p>AMH</p>	
				<p>CHECKED</p>		<p>LJP</p>	
				<p>NO.</p>		<p>DATE</p>	
				<p>REVISION</p>		<p>DESCRIPTION</p>	
				<p>BY</p>			







































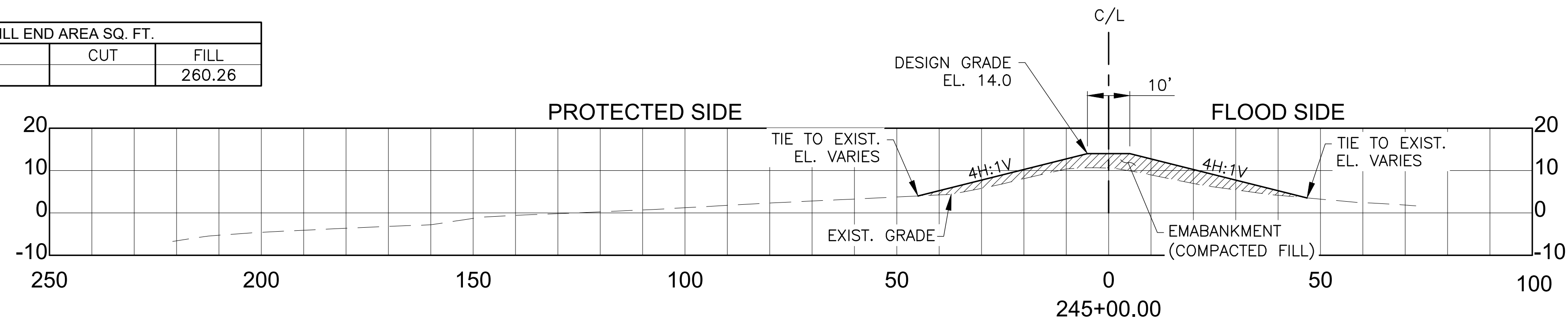




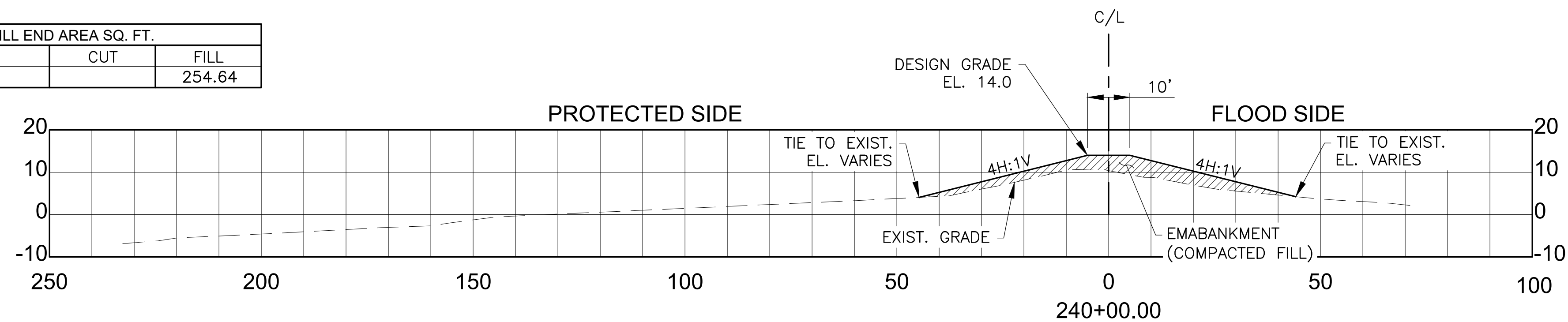




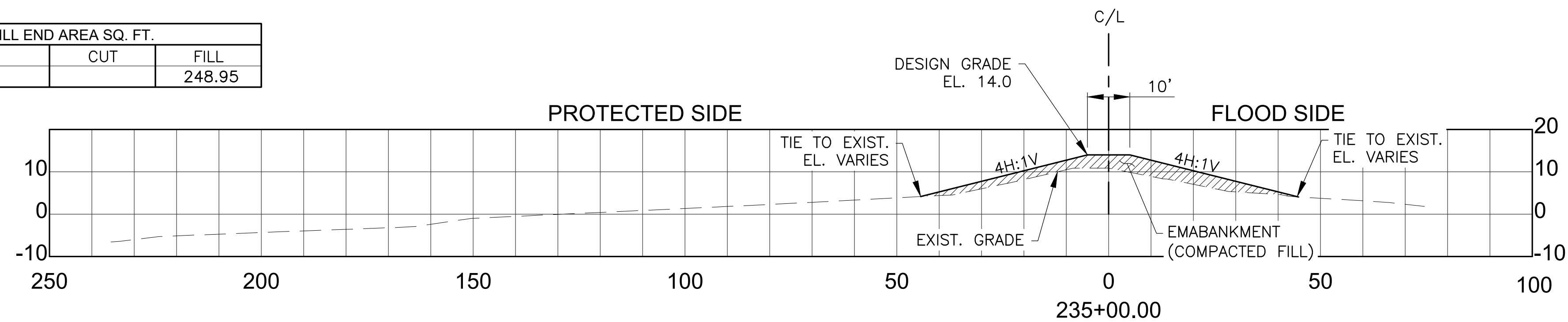
CUT/FILL END AREA SQ. FT.		
MATERIAL	CUT	FILL
COMPACTED FILL		260.26



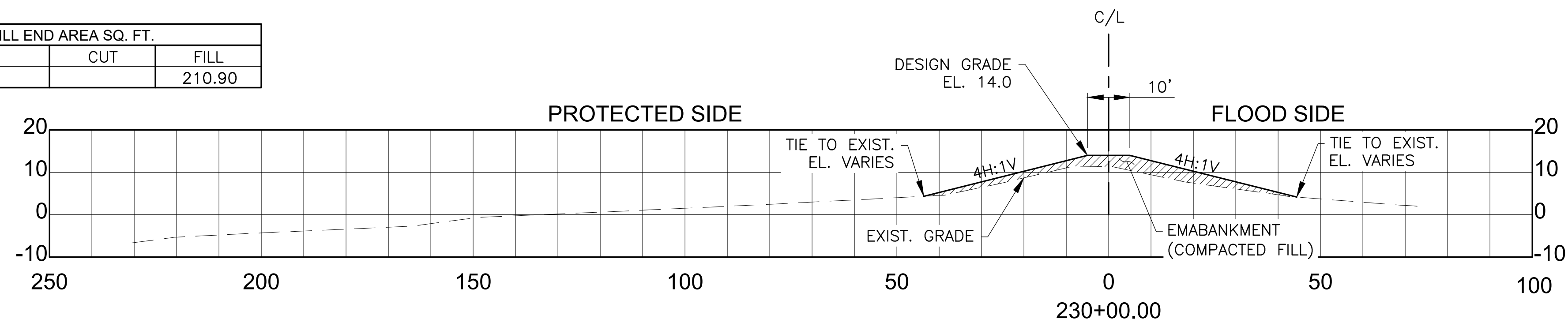
CUT/FILL END AREA SQ. FT.		
MATERIAL	CUT	FILL
COMPACTED FILL		254.64



CUT/FILL END AREA SQ. FT.		
MATERIAL	CUT	FILL
COMPACTED FILL		248.95



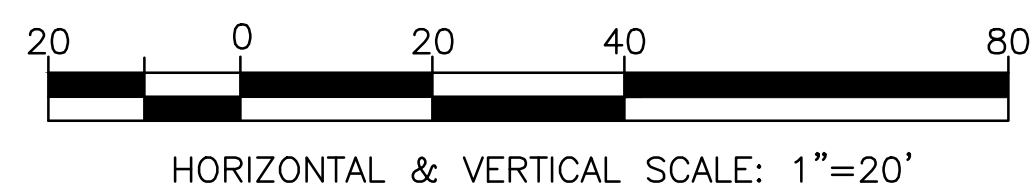
CUT/FILL END AREA SQ. FT.		
MATERIAL	CUT	FILL
COMPACTED FILL		210.90



NOTES:

1. ELEVATIONS REFER TO THE NORTH AMERICAN VERTICAL DATUM 1988 2009.55 (NAVD 88 2009.55). ELEVATIONS ARE IN FEET.
2. EMBANKMENT, COMPACTED FILL SHALL MEET CONTRACT SPECIFICATIONS.
3. UPON LEAVING THE JOB SITE AND AFTER THE HAUL ROUTE IS NO LONGER IN USE, THE PROTECTED SIDE BERM SHALL BE GRADED/DRESSED TO SLOPE TO DRAIN TO INTERIOR DRAINAGE CANAL PRIOR TO FERTILIZING, SEEDING AND MULCHING.

## DESIGN CROSS SECTIONS

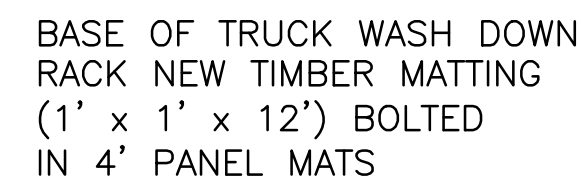


 <p><b>SOUTHEAST LOUISIANA FLOOD PROTECTION AUTHORITY - WEST</b> <small>WEST JEFFERSON LEVEE DISTRICT / BIGCHIEFS LEVEE DISTRICT</small></p>		WBV 148'Z LEVEE LIFT PRIOR TO ARMORING SLFPA - WEST  JEFFERSON PARISH, LOUISIANA		DESIGN CROSS SECTIONS, C/L STA 230+00 TO C/L STA 245+00	
PROJECT NO. 2017-277		DATE FEB 2017		SHEET NO. 26	
AIMS GROUP, INC		DESIGNED	AMH/HJD		
4424 ZENITH ST METAIRIE, LA 70001		DETAILED	AMH		
		CHECKED	LJP		
		NO.	DATE	BY	
		REVISION DESCRIPTION			

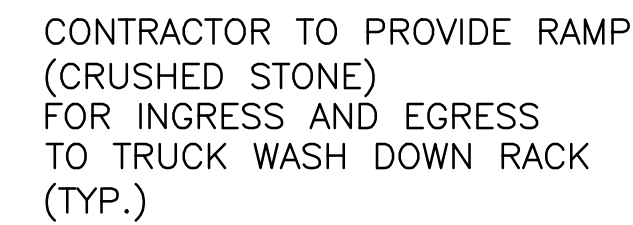








(ACCESS/HAUL ROAD)  
N.T.S



N.T.S

N.T.S

1. SLOPE TIMBER MATTING TO DRAIN TOWARDS CANAL.
2. DISPOSE OF MUD AS DIRECTED BY THE AUTHORITY REPRESENTATIVE
3. REMOVE TIMBER MATTING AFTER WORK COMPLETION.
4. SEE SHEET 4 FOR LOCATION ON PROJECT SITE.



1. TEMPORARY ACCESS ROAD TO THE STAGING AREA TO BE REMOVED AND AREA RESTORED TO THE PRE-CONSTRUCTION CONDITION BEFORE CONTRACTOR IS SUBSTANTIALLY COMPLETE.



N.T.S.

SHEET NO.  
28









Diagram illustrating the cross-section of a levee and embankment structure. The vertical axis represents elevation in feet (0 to 30). The horizontal axis represents stationing (249+00.00 to 249+50.00).

Key features and labels:

- LEVEE CROWN, EL. 14.0'**: Indicated by a horizontal line at elevation 14.0 feet.
- EMBANKMENT (COMPACTED FILL)**: The area below the levee crown, shown with hatching.
- EDGE EXIST. SLOPE PAVING C/L STA. 248+82.74 (+/-)**: Points to the existing slope paving edge.
- EXIST. SLOPE PAVING EL. TO BE FIELD VERIFIED**: Points to the existing slope paving line.
- EXIST. T-WALL**: Points to the existing T-wall structure.
- EXIST. LEVEE CROWN. EL. VARIES**: Points to the existing levee crown line.

NOTES:

1. ELEVATIONS ARE IN FEET AND REFER TO NAVD88 (2009.55)
2. ALL EXISTING SLOPE PAVING ELEVATIONS TO BE VERIFIED IN FIELD BY CONTRACTOR.
3. EXISTING SLOPE PAVING LOCATIONS ARE APPROXIMATE AND SHOULD BE FIELD VERIFIED BY THE CONTRACTOR.
4. CONTRACTOR TO MAKE A SMOOTH 1V ON 10H TRANSITION TO MATCH THE EXISTING CONCRETE SLOPE PAVING.

[illegible]