



# EASTERN TIE-IN

Updated May 2013

U.S. ARMY CORPS OF ENGINEERS

BUILDING STRONG®

Public safety is the Corps of Engineers' top priority. Congress has fully authorized and funded the Hurricane and Storm Damage Risk Reduction System (HSDRRS) for southeast Louisiana. The \$14.45 billion HSDRRS includes five parishes and consists of 350 miles of levees and floodwalls; 73 non-Federal pumping stations; 3 canal closure structures with pumps; and 4 gated outlets.

## Project Summary

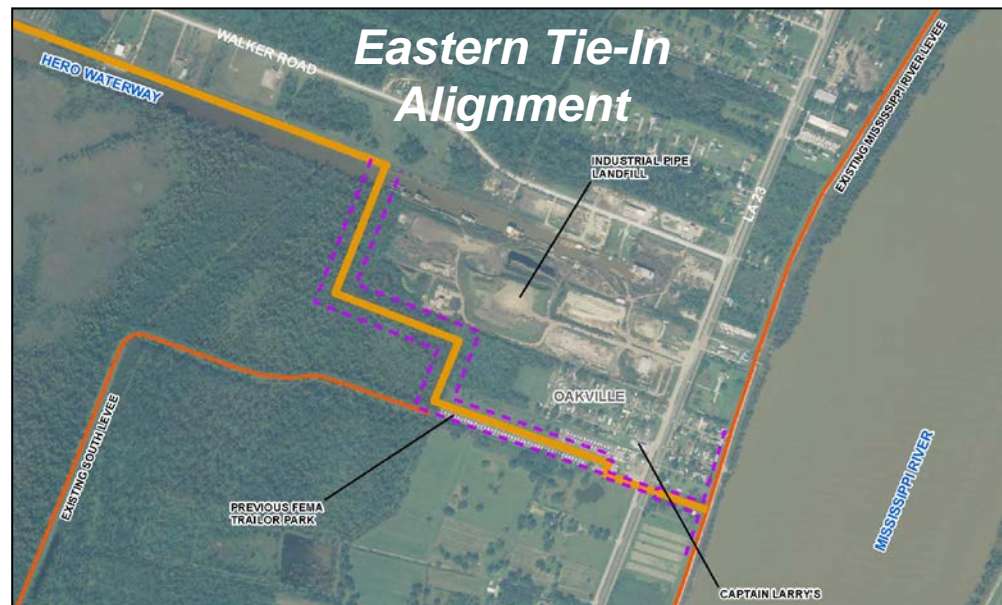
The Eastern Tie-In project, located on the west bank of the Mississippi River in the vicinity of the town of Oakville in Plaquemines Parish, ties into the existing Hero Canal levee, crosses Highway 23, and links to the Mississippi River Levee system.

The structural features being built by the Corps reduce the risk associated with a storm surge event that has a one percent chance of occurring in any given year, or a 100-year storm surge. The total construction value for the Eastern Tie-In projects is an estimated \$78 million.

## Project Features

The Eastern Tie-In project connects the Mississippi River Levees with the existing Hero Canal Levee. This system includes the following features: a navigable stoplog gate across the Hero Canal, levees, a pump station, a floodwall, a floodgate across Highway 23, a railroad gate and a tie-in levee at the Mississippi River Levee.

The Corps determined that a double swing gate system was the most reliable way to close the system across Highway 23 because it is a proven reliable risk reduction feature. It requires minimal training and advanced preparation; it can be closed in four hours or less, allowing travel lanes to be quickly closed and opened in the event of a storm. An emergency by-pass road was constructed for authorized vehicles when the gate is closed.



- Over -

U.S. ARMY CORPS OF ENGINEERS – TEAM NEW ORLEANS

7400 Leake Avenue, New Orleans, LA 70118 | [www.mvn.usace.army.mil](http://www.mvn.usace.army.mil)

Visit the following links to follow us on Facebook, Twitter and Flickr:

[www.facebook.com/neworleansdistrict](http://www.facebook.com/neworleansdistrict)

[www.twitter.com/teamneworleans](http://www.twitter.com/teamneworleans)

[www.flickr.com/teamneworleans](http://www.flickr.com/teamneworleans)



# EASTERN TIE-IN

Updated May 2013

**U.S. ARMY CORPS OF ENGINEERS**

**BUILDING STRONG®**

## Project Status

The Eastern Tie-In is split into 3 contracts. All three contracts have been awarded; two are complete:

- WBV 9a – Includes earthen levees, Oakville Pump Station and the emergency bypass road. Construction for this contract is complete.
- WBV 9b – Includes the stoplog closure structure on the Hero Canal
- WBV 9c – Includes the floodwalls and the swing gates at Hwy 23

All contracts have features in place to defend against a 100-year storm surge event; however, construction on WBV 9a will be completed by the start of the 2013 hurricane season.



***Swing Gate, Open Position  
(View from South)***



***Swing Gate, Closed Position  
(View from South)***

**U.S. ARMY CORPS OF ENGINEERS – TEAM NEW ORLEANS**

7400 Leake Avenue, New Orleans, LA 70118 | [www.mvn.usace.army.mil](http://www.mvn.usace.army.mil)

Visit the following links to follow us on Facebook, Twitter and Flickr:

[www.facebook.com/neworleansdistrict](http://www.facebook.com/neworleansdistrict)

[www.twitter.com/teamneworleans](http://www.twitter.com/teamneworleans)

[www.flickr.com/teamneworleans](http://www.flickr.com/teamneworleans)